



Let's get you **connected**

Welcome to Yomojo 5G Internet

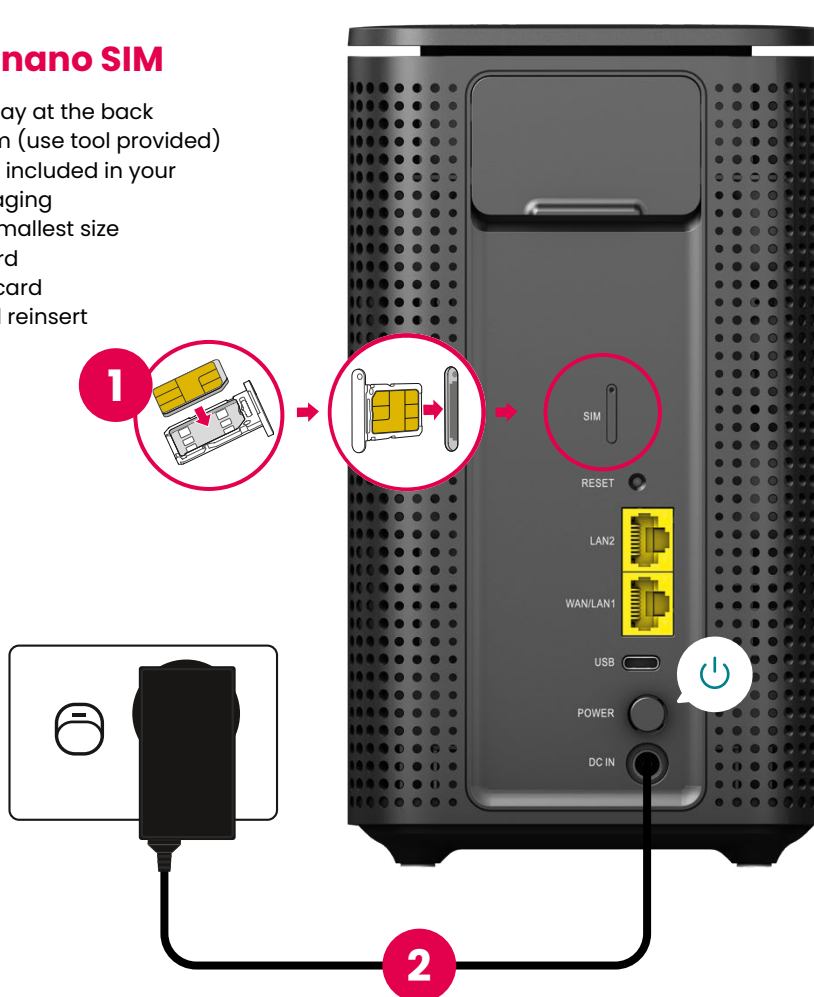
Ultra Wi-Fi 5G Modem Quick Start Guide

Yomojo[®]

Let's get you set up in 4 simple steps

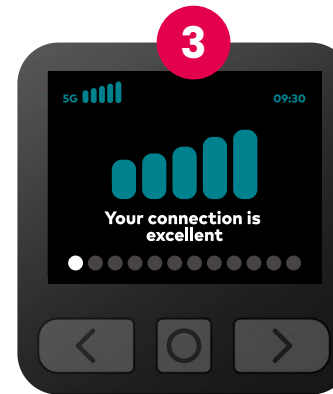
1. Insert the nano SIM

- Eject the SIM tray at the back of your modem (use tool provided)
- Locate the SIM included in your modem packaging
- Push out the smallest size (nano) SIM card
- Place the SIM card in the tray and reinsert




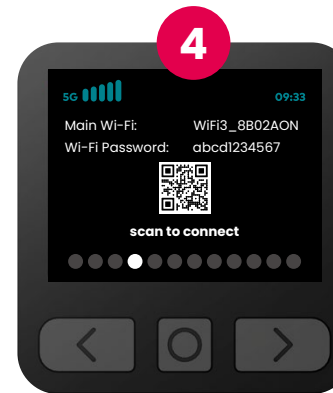
2. Power the modem

- Plug in the modem's power cable into the powerpoint
- Press the modem power button on
- Wait 30 seconds for the modem to complete powering up




3. Check the modem screen

- Navigate through the modem screen using the buttons under the screen:

- Use the screen to view your 5G connection strength, Wi-Fi login details, screen brightness and more



4. Connect devices to Wi-Fi

Connect your device using either the QR code or the Wi-Fi Name and Password. Found here:

- The modem screen (Press  button)
- Wi-Fi fridge magnet
- Modem base sticker

Handy tips

Something not working as expected? Try these common fixes.

Slow internet?

If you are connected to the modem's Wi-Fi network, the issue may be that the modem is not getting a clear 5G signal. View your 5G signal strength on the modem screen and use the following tips to maximise your connection:

- Check you placed your modem near a window facing the nearest Optus 5G tower
- Check your modem isn't blocked by any large or metal objects
- Making small repositioning movements and rotating the modem slightly can help improve your signal strength

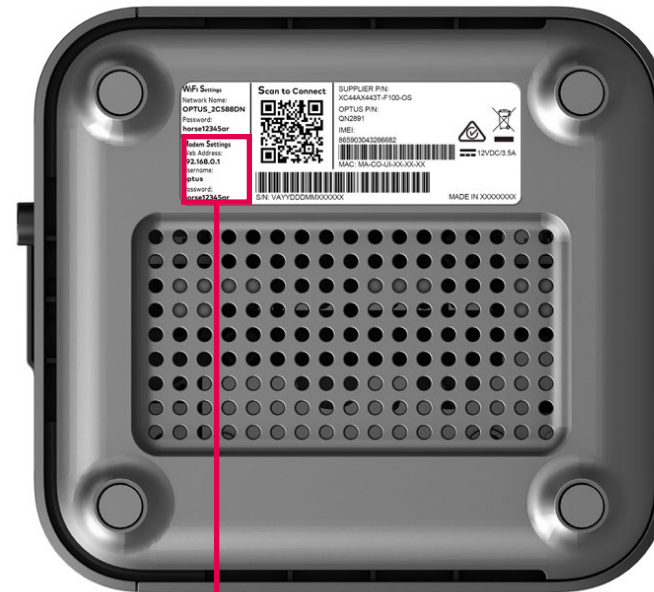
Slow Wi-Fi?

If you need to cover a large home or office, you may need a Wi-Fi Booster to reach more rooms.



Manage your modem

To change your Wi-Fi name, password and other settings you can view and manage your modem at <http://192.168.0.1>
Login details are found on the modem base



Modem Settings

Web Address
192.168.0.1

Password
your-password

Need assistance?

Contact our 5G Internet expert team at

1300 966 656

Monday to Sunday 8:00 am to 8:00 pm

*All times AET

Yomojo[®]

www.yomojo.com.au